

ITX-B75-10

Supports Intel Socket 1155 Processor

With ATX Power

2*RTL8111E LAN /4*SATA/10*COM/ 2*DDR3 SODIMM/

1*MINI-SATA/2*VGA +HDMI

User Manual

Copyright 2013

All Rights Reserved.

Manual's first edition:

For the purpose of improving reliability, design and function, the information in this document is subject to change without prior notice and does not represent a commitment on the part of the manufacturer.

In no event will the manufacturer be liable for direct, indirect, special, incidental, or consequential damages arising out of the use or inability to use the product or documentation, even if advised of the possibility of such damages.

This document contains proprietary information protected by copyright. All rights are reserved. No part of this manual may be reproduced by any mechanical, electronic, or other means in any form without prior written permission of the manufacturer.

Trademarks

ITX-B75-10 is a registered trademarks of YY IBM PC is a registered trademark of the International Business Machines Corporation; Pentium is a registered trademark of Intel Technologies Inc; Award is a registered trademark of Award Software International Inc; other product names mentioned herein are used for identification purposes only and may be trademarks and/or registered trademarks of their respective companies.

Specifications

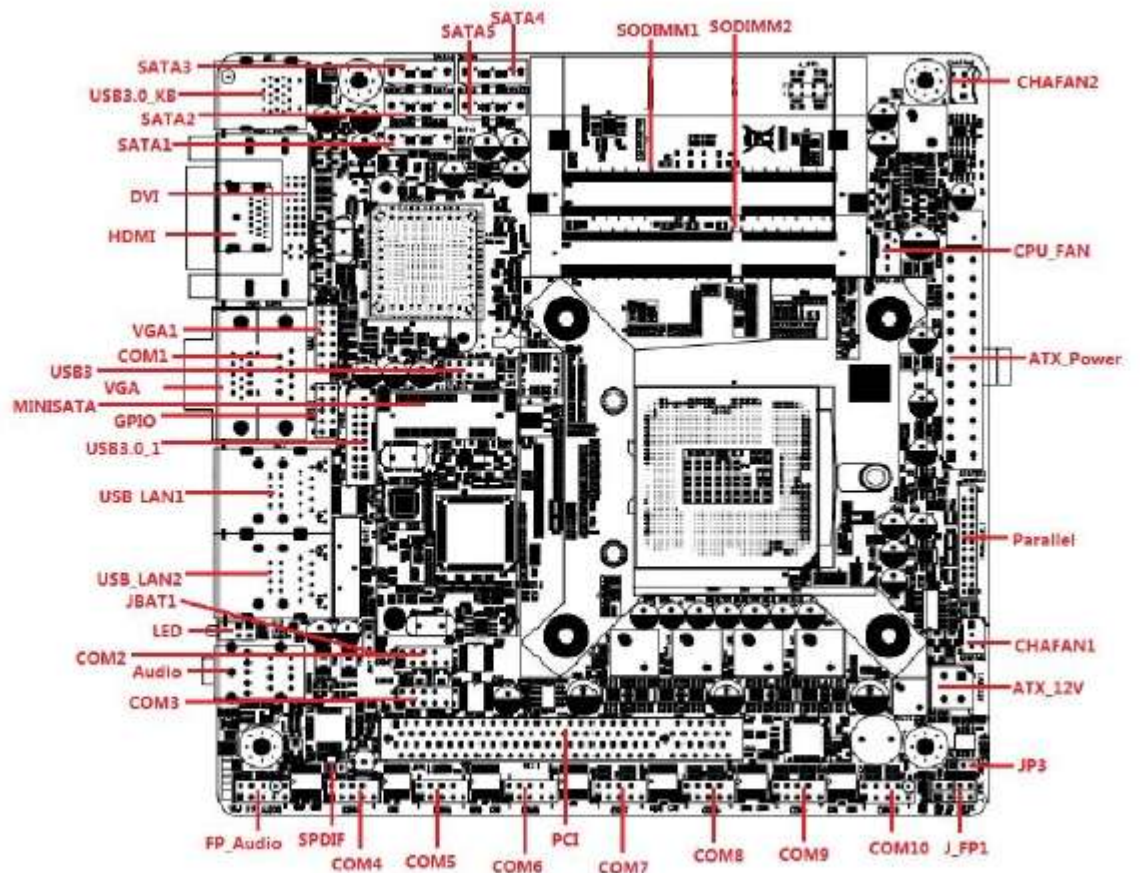
CPU	Supports 2nd (3rd) Generation Intel® Core™ i7 / i5 / i3 in LGA1155 Package
Chipset	INTEL® B75
Memory	2 * 204-pin SODIMM Sockets for un-buffered dual channel DDR3 1066/1333/1600 SDRAM up to 8G
Expansion Slots	1 * PCI 8X slot
Storage	4* Serial ATA2 3Gb/s connectors 1 * Mini-SATA 6Gb/s connector
Audio	Realtek ALC662 HD Audio CODEC
Ethernet LAN	2*RTL8111E LAN
LVDS	NO
USB	8 * USB 2.0, 4 * USB 3.0
Special Features	Intel Socket 1155 Processor Support DC FAN
Rear Panel I/O	1* PS2 KB+MS 4 * USB 2.0 2 * USB 3.0 1 * COM port 2 * VGA port 1 * HDMI port 2 * RJ-45 port 2 * Audio I/O ports (Mic and Line-out)
Internal I/O	4 USB 2.0 ports 2 USB 3.0 ports 4* Serial ATA2 3Gb/s connectors 1* GPIO header 1* Parallel header 1 * Mini-SATA 6Gb/s connector 1 * 24pin ATX in 1 * 4p 12V ATX in 3 * NB / Chassis Fan connectors; 1 * VGA header 1 * AUDIO header 1 * PCI 8X slot, 9* COM(RS232) connector
BIOS	AMI 32MB DPI Flash ROM
Functional	ATM, Automation, medical Equipment, Security, Networking, POS, General Application, Gaming Machine, Transportation
Packing	Color Box Dimension200(W) x 200(D) x 100(H)mm
Certificate	CE, FCC, RoHS
Temperature	Operating within 0~60 centigrade (Suggest to use system FAN) Storage within -20-85 centigrade
Form Factor	Mini ITX Form Factor(18cmx18cm)

Package Contents

Check if the following items are included in the package.


- 1 * ITX-B75-10 board
- 1 * Quick Manual
- 1 * Software Utility CD

Locations(TopSide)



Connector and Jumper Setting

1)JBAT : CMOS Data retention/clear

A small black 3-pin jumper with the number '8' printed on it.

STATUS	SETTING
Open	CMOS data retention. (Default).
Short	CMOS data Clear

2)GPIO

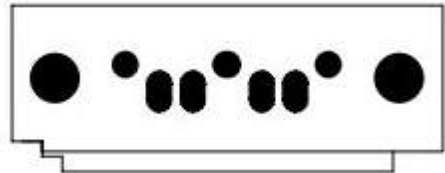
GPIO			
SB_GPIO17	1	2	SB_GPIO01
SB_GPIO06	3	4	SB_GPIO07
SB_GPIO68	5	6	SB_GPIO69
SB_GPIO70	7	8	SB_GPIO71
GND	9	10	VCC 5V

3) Internal USB2.0 connector

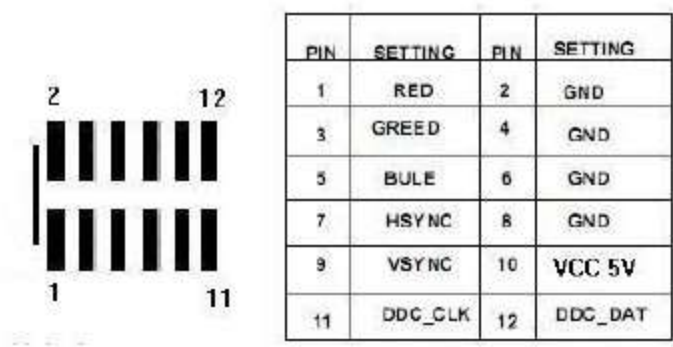
A 10-pin internal USB connector with pins numbered 1 to 10.

PIN	SETTING	PIN	SETTING
1	+5V	2	+5V
3	USB3-	4	USB4-
5	USB3+	6	USB4+
7	GND	8	GND
		10	GND

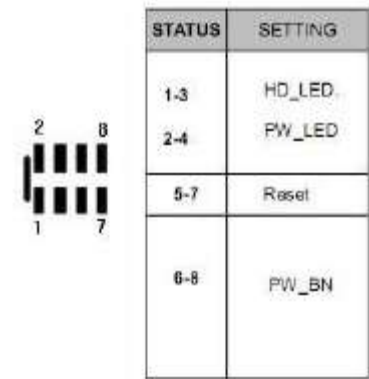
4)SATA1: SATA device connector #1 #2 #3 #4



5) VGA1: Extra VGA Signal connector



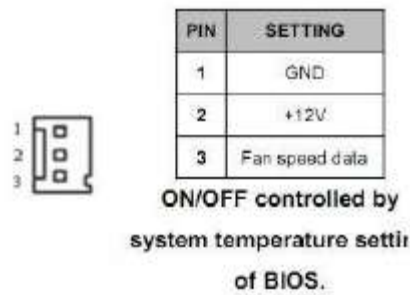
6)FP1: Front panel connector



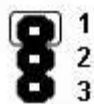
7)AUDIO 2: 5.1channels Audio signal connector

PIN	SETTING	PIN	SETTING
1	MIC2_L	2	GND
3	MIC2_R	4	GPIO
5	LineOut2_R	6	NC
7	SENSE_B	8	
9	LineOut2_L	10	NC

8)CHAFAN CPUFAN: System DC fan connector



9)JP3: POWER voltage selection



1-2	POWER ON
2-3	POWER OFF

10)LAN: RJ45 connector for Ethernet port



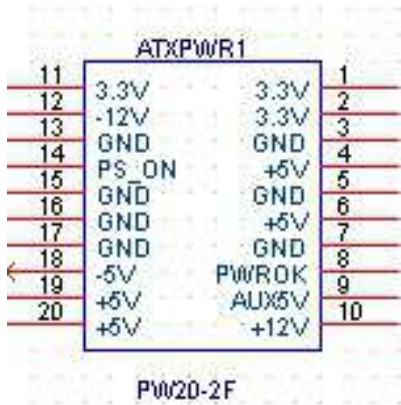
RJ45 connector for Gigabit Ethernet port #1.
Wake-On-LAN supported.

11)COM1-10: COM connector

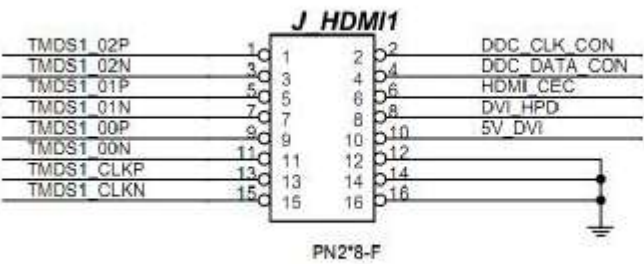
COM 插针 (5*2Pin 2.54mm)

针脚	定义	针脚	定义
1	-NDCD	2	SIN
3	SOUT	4	DTR
5	GND	6	DSR
7	RTS	8	CTS

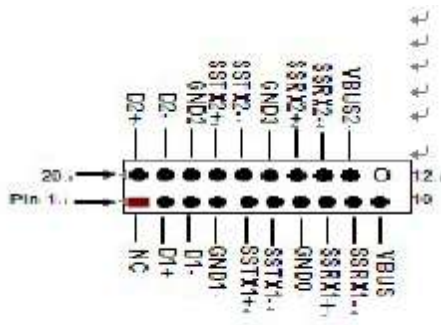
12) ATX Power



13)HDMI: connector



14) USB 3.0 Port Headers



BIOS SETTING

This chapter describes the BIOS menu displays and explains how to perform common tasks needed to get the system up and running. It also gives detailed explanation of the elements found in each of the BIOS menu displays. The following topics are covered:

Main Setup

Advanced Setup

Chipset Setup

Boot Setup

Security Setup

Exit Setup

Once you enter the BIOS CMOS setup utility, you can use the control keys that listed at the bottom of the menu to select the desired value in each item.